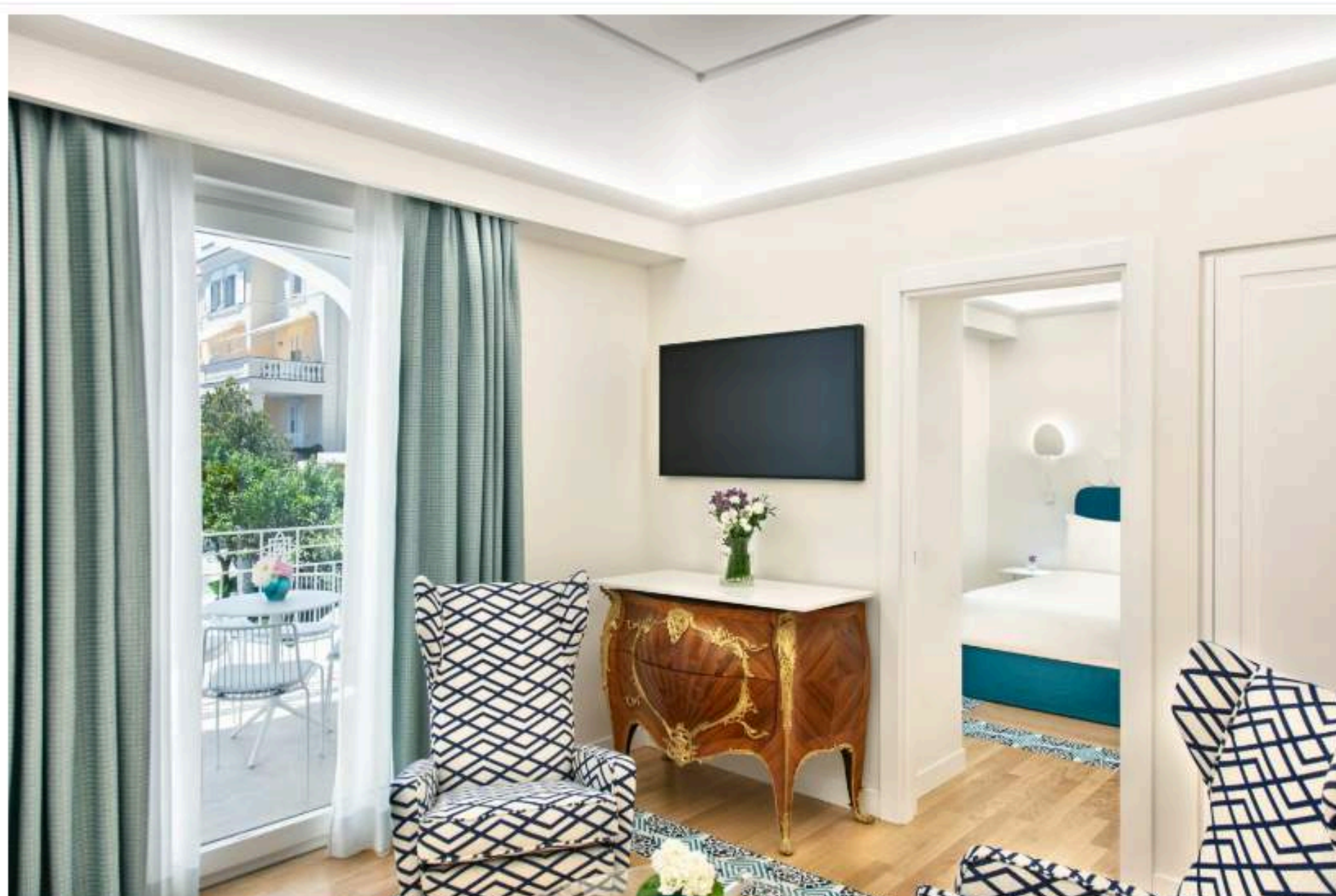




Pazziella Garden & Suites, an iconic, 25-all-suite hotel located in the town center of Capri, Italy, (yes, more famously known as Isle of Capri) completed a floor-to-ceiling interior renovation this past year and is now open for the spring and summer season.

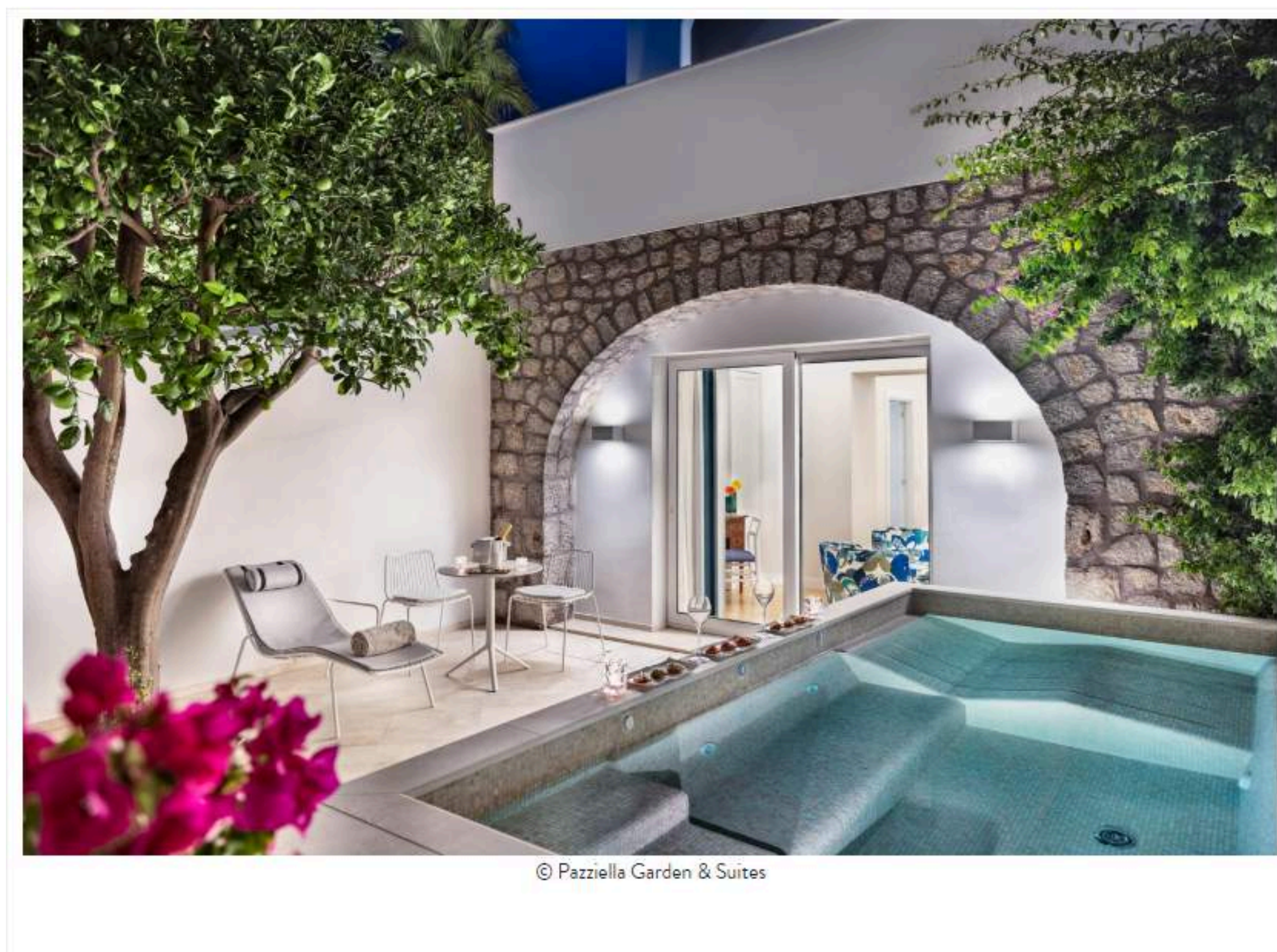
Pazziella Garden & Suites was originally a private villa dating back to the early 1900s, and has been meticulously transformed by Salvatore Naldi Group into an exquisite, 25-suite boutique property. Established as a small hotel in 1950 known as A' Pazziella, the property remains one of Capri's most longstanding hotels, offering a blend of tradition and contemporary luxury.



© Pazziella Garden & Suites

Nestled in the heart of the island's town center, just a short stroll from the central [Piazza Umberto I](#), Pazziella Garden & Suites features its own scenic garden containing a majestic lemon tree and a beautiful Magnolia tree, adding to the property's tranquility, and is an ideal retreat from the island's bustling streets.

The renovation of Pazziella Garden & Suites has resulted in a refined collection of exquisite suites housed in two charming villas surrounded by lush greenery. Each suite is elegantly furnished in authentic Capri style, including the Garden View Prestige Room with a large balcony, the luxurious Garden View Terrace Suite with a panoramic terrace and the Pool Patio Suite with a private swimming pool.



Guests can also enjoy the Sea View Capri Suite with magnificent balcony views of the [Tyrrhenian Sea](#), the Sea View Deluxe Room and the Sea View Junior Suite with a view of the bay. The hotel also boasts the Whirlpool Patio Suite and the Whirlpool Terrace Suite, both featuring whirlpool baths, as well as the Whirlpool Terrace Junior Suite, offering a whirlpool tub on a panoramic terrace.

Teresa Coscia Naldi, owner of the hotel, in collaboration with architect Rosanna Coscia, oversaw the hotel's new interior design, which involved renowned Italian craftsmen and local artisans to capture the true essence of the location where it stands.



© Paziella Garden & Suites

One of the highlights of the property is P Garden Restaurant, an indoor-outdoor space that extends into the gardens and poolside area. Led by Executive Chef Angelo Fumeto, the restaurant offers a seasonal Mediterranean menu featuring signature dishes such as *tonnarello* pasta with tub gurnard pulp, lemon and zucchini, showcasing the essence of Mediterranean and Neapolitan cuisine. The difference between tonnarelli and spaghetti is the thickness and cross section of the noodles. Tonnarelli is a thicker noodle than spaghetti.

The restaurant welcomes diners with an à la carte breakfast and delicious lunch menu, both indoors or by the pool. At night, the restaurant transforms into a candlelit dining experience that provides a very charming atmosphere for guests.